

**MARIN LOCAL AGENCY FORMATION COMMISSION**

RESOLUTION NO. 23-07

**RESOLUTION REAFFIRMING THE SPHERE OF INFLUENCE OF THE SAUSALITO-MARIN CITY SANITARY DISTRICT**

**WHEREAS** upon determination and adoption of a sphere of influence, the Marin Local Agency Formation Commission is required to periodically review and update adopted spheres of influence for each city and special district not less than once every five years, as necessary, within Marin County under Government Code Section 56425 (g); and

**WHEREAS** the Executive Officer has conducted a review of the adopted sphere of influence of local government agencies in the Golden Gate Corridor area, prepared a summary, *Golden Gate Corridor Municipal Service Review*, including his recommendations thereon, the summary having been presented to and considered by this Commission; and

**WHEREAS** a public hearing by this Commission was held on the *Golden Gate Corridor Municipal Service Review* and staff's recommendations contained in that report on the date and at the time noticed thereof, and at the hearing, this Commission heard and received all oral and written testimony, objections and evidence which were made, presented or filed, and all persons present were given an opportunity to hear and be heard with respect to the proposal and the Executive Officer's report.

**NOW, THEREFORE**, based upon the information contained in the Executive Officer's report, correspondence from affected agencies and information received during the public hearings, the Marin Local Agency Formation Commission **DOES HEREBY RESOLVE, DETERMINE AND ORDER** as follows:

Section 1. The sphere of influence of the Sausalito-Marine City Sanitary District is hereby reaffirmed as shown on Exhibit B attached hereto and incorporated herein by reference and the Commission makes the written determinations pursuant to Government Code section 56425(e) as provided for in Exhibit A attached hereto and incorporated herein by reference.

Section 2. Pursuant to Section 15061(b)(3) of the State CEQA Guidelines, the Commission finds that this review and reaffirming of the sphere of influence of the Sausalito-Marine City Sanitary District is exempt from the provisions of the California Environmental Quality Act because it can be seen with certainty that there is no possibility that the activity in question may have a significant effect on the environment.

Section 3. The Executive Officer is hereby directed to mail copies of this resolution to affected local government agencies in the Golden Gate Corridor area.

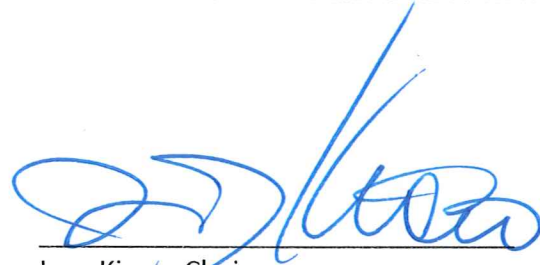
**PASSED AND ADOPTED** by the Marin Local Agency Formation Commission, on April 6, 2023, by the following vote:

AYES: Kious, Coler, Rodoni, Lucan, Murray, Burdo, Savel

NOES: \_\_\_\_\_

ABSTAIN: \_\_\_\_\_

ABSENT: \_\_\_\_\_



Lew Kious, Chair  
Marin LAFCo

**ATTEST:**

  
\_\_\_\_\_  
Jason Fried, LAFCo Executive Officer

**APPROVED AS TO FORM:**

  
\_\_\_\_\_  
Malathy Subramanian, LAFCo Counsel

Attachments to Resolution No. 23-07

- a) Exhibit A - Determinations
- b) Exhibit B - Map

## EXHIBIT A

## SAUSALITO-MARIN CITY SANITARY DISTRICT SPHERE OF INFLUENCE DETERMINATIONS

## GOVERNMENT CODE SECTION 56425

- 1) The present and planned land uses in the area, including agricultural and open-space lands.

Present and planned land uses in the adopted sphere of influence are governed by the General Plan of the City of Sausalito and the Marin Countywide Plan. The areas within the sphere of influence, including the City of Sausalito and the unincorporated community of Marin City, are primarily built out at this time

- 2) The present and probable need for public facilities and services in the area.

The Sausalito-Marín City Sanitary District's current facilities and services included in the District's sphere of influence are sufficient to provide those services to the area within the designated sphere of influence. The District has service capacity that can extend beyond its current levels being offered, including (but not limited to) the projected buildout total within the sphere of influence.

- 3) The present capacity of public facilities and adequacy of public services that the agency provides or is authorized to provide.

The operating departments and public facilities of the Sausalito-Marín City Sanitary District are adequate to provide service to the District's designated service area and areas within its sphere of influence. Additionally, the District has the capacity to continue to provide collection services to those areas of Tamalpais Community Services District which lie outside of the District's sphere of influence.

- 4) The existence of any social or economic communities of interest in the area if the commission determines that they are relevant to the district.

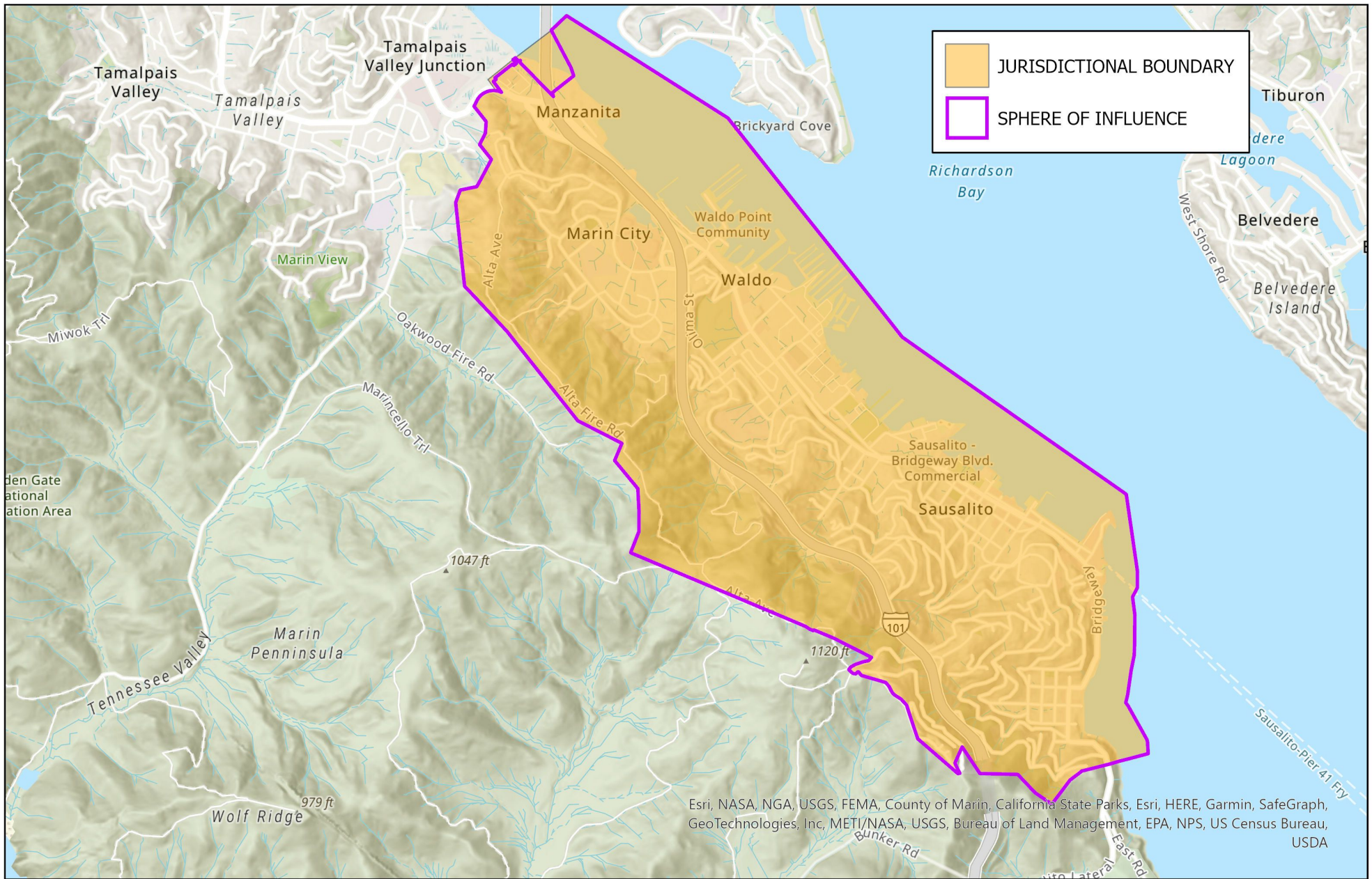
The Commission has determined that social and economic communities of interest between areas currently within the boundaries of the Sausalito-Marín City Sanitary District and the area surrounding its jurisdiction are not relevant to the determination of the district's sphere of influence.

- 5) For an update of a sphere of influence for a district that provides public facilities or services related to sewers, municipal and industrial water, or structural fire protection, that occurs on or after July 1, 2012, the present and probable need for those public facilities and services of any disadvantaged unincorporated communities within the existing sphere of influence.

The operating departments and public facilities of the Sausalito-Marín City Sanitary District are adequate to provide service to the District's designated service area and areas within its sphere of influence as well as the capacity to handle the service increases that would come with projected future growth within the service boundary. Additionally, the District has the capacity to continue to provide collection services to those areas of Tamalpais Community Services District which lie outside of the District's sphere of influence.

The District's current jurisdictional boundary surrounds a census tract block group (Tract 1290, Block Group 1) that has been designated by Marin LAFCo as a disadvantaged unincorporated community (DUC) based on 2020 U.S. Census Bureau Redistricting Data. A disadvantaged community is defined in Water Code Section 7905.5(a) as a community with an annual median household income of less than 80 percent of the statewide median household income. The statutory definition of DUCs comes from Government Code Section 56033.5, which defines DUCs as "inhabited territory" that constitutes all or a portion of a disadvantaged community. "Inhabited territory" may be defined by Government Code Section 56046 as having at least 12 registered voters, or it can be determined by "commission policy".

Per Marin LAFCo's policy, Marin LAFCo will include considerations of disadvantaged unincorporated communities within a city or district sphere of influence in statements of written determinations of municipal service reviews. Marin LAFCo will prohibit the approval of city annexations greater than 10 acres that are contiguous to a disadvantaged unincorporated community unless the city applies to annex the disadvantaged unincorporated community as well. At this time Marin LAFCo has no applications for annexation for any lands contiguous to the identified DUC. Should LAFCo in the future get such a request then it will work with the community to determine if it is in the best interest of those living within the DUC to be annexed. If it is not within the community's best interest, then they would not be included with that application.



Esri, NASA, NGA, USGS, FEMA, County of Marin, California State Parks, Esri, HERE, Garmin, SafeGraph, GeoTechnologies, Inc, METI/NASA, USGS, Bureau of Land Management, EPA, NPS, US Census Bureau, USDA



# Sausalito-Marín City Sanitary District

